

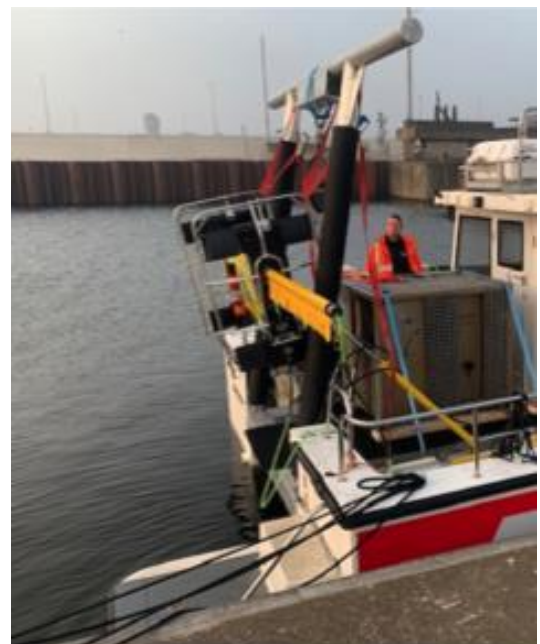


POWERGLIDE 46 CAT NAUTICAL SURVEYOR

Fast & Flexible Surveying

The Nautical Surveyor is Promarine's most stable platform. At 14 metres in length and with a width of 5.2 metres, it is our widest vessel and offers the space and stability for an aft-deck A-Frame, used for deploying towed survey systems and ROV/AUV.

- 900hp delivers fast transit to job sites, saving time & money
- Catamaran hull enables stability and comfort onboard
- Built in moonpool
- Integral A-Frame for safe towed survey and ROV/AUV launching
- Diving platform



Fast facts

Technical Spec

Hull: Polyester/GRP
Tube: Lightweight foam-filled Fender
Length: 14 mtr
Width: 5.20 mtr
Draft: 1.50 mtr
Fuel type: Diesel
Capacity: 1500 ltr
Power: 2x 450 hp Iveco
Cruise speed: 20 knots
Top speed: 24 knots
Survey Speed: 2-6 knots
Max Persons: 10 (including skipper and deckhand)
Range: 600 NMI

Description

Designation: PowerGlide 46
Type: Dive Support | CCTV | Survey | Surveillance

Navigation:

GPS Chartplotter | Radar | VHF with DSC | Depth sounder |
Compass
ENC Dedicated Helmsman Display | (redundant dual
installations)

Rescue Equipment:

Life Raft | Solas life vests with MOB1 AIS
Solas Immersion suits | E-PIRB | AIS SART
Searchlight | Fire Extinguishers | Rescue Sling
Man Overboard Recovery System | Rescue buoys
Rescue Zone | Crew Finder | AED

Cabin:

10X Suspension Seats (including helmsman and
deckhand)
Kitchen | Heating | hot/cold water facilities
230V Power with Uninterruptible Power Supply
Toilet | Separate storage compartment for gear

Deckspace:

13 square meter aft deck with hydraulic A-frame
Front deck has 12 square meters with a moonpool
Wide gangway on starboard side from Fore to Aft deck

Certification:

Mecal Class | Imca Ecmid

Standard Equipment:

Cabin with Navigation Lights | Flashlight | Searchlight
4x Battery incl. Emergency Start System
Staircase with railing on the bow

